

MHSAA REGIONAL 18-2 TRACK & FIELD
MEET INFORMATION

Hazel Park High School
FRIDAY, MAY 20, 2022

ADMISSION

All tickets will be digital, sold via GoFan and cost \$7.00. A mobile device is required. Links for GoFan will be on each site hosts GoFan account found at www.GoFan.co

TIME SCHEDULE

12:00 – 12:45pm Implement Weigh-In (by storage shed, in storage shed if needed)

1:00pm **Coaches Meeting/Preliminary Scratches Due**

1:30 Girls/ Boys Pole Vault will not be contested

Boys's High Jump girls to follow)

Boy's Shot Put (girls to follow)

Girl's Discus (boys to follow)

Girl's Long Jump (boys to follow) Prelims will be open order.

2:30pm

3200 Relay Finals

100 Dash First Round

110/100 Hurdle First Round

200 Dash First Round

Afternoon scratches due at the conclusion of the 3200 meter relay and preliminary of 100/200 high hurdles

4:00pm(Approximately) - Senior's last walk. Will be discussed during the coaches meeting.

Timed Running Finals. No earlier than 5:00pm!

Boys run first in even years, girls first in odd years.

- National Anthem
- 100/110 Hurdle Finals (1 heats each gender)
- 100 Dash Finals (1 heats each gender)
- 800 Relay Finals (multiple heats per gender)
- 1600 Run Finals (1 or two heats per gender)
- 400 Relay Finals (multiple heats per gender)
- 400 Dash Finals (multiple heats per gender)
- 300 Hurdle Finals (multiple heats per gender)
- 800 Run Finals (1 or two heats per gender)
- 200 Dash Finals (1 heats each gender)
- 3200 Run Finals (1 heat each gender)
- 1600 Relay Finals (multiple heats per gender)

SCHEDULE

We will give calls prior to the start of each race/event. It is the coach's and athlete's responsibility to check in at the bullpen with the Clerk of the Course and be ready to compete at the appropriate time. Make sure to check in with the clerk when the call is made for your event. It is permissible to have a teammate stand in for an individual that may be at a field event to help the clerk.

COACHES MEETING

There will be a coach's meeting at 1:00pm down by the track shed- please meet there by 12:45pm

SCORING & AWARDS

8 places score in the meet (10, 8, 6, 5, 4, 3, 2, 1);

1st – 8th places will receive medals in all events.

A team trophy will be given to the first-place team at the conclusion of the meet.

PARTICIPATING SCHOOL INFORMATION

Please download and read the information from the MHSAA website.

IMPLEMENT WEIGH IN

12:00 – 12:45 by track shed

SCRATCHES

All field events and preliminary running event scratches are due by 1:00 to the timing tent. Remaining event scratches are due 4:00pm.

JURY OF APPEALS

The jury of appeals will consist of the Meet Manager and a girls' coach representative and a boys' coach representative. They will be announced at the coaches meeting

MULTI-EVENT ATHLETES

Multi event athletes must check out of one event to report to another. If the athlete is in 2 field events at the same time, he/she may have to move back and forth between events. When the multi event athlete finishes one event, he/she has 5 minutes at the conclusion of that event, or trial, to report back to the other event. It is up to those athletes to keep the event judges aware of where they are. Running events take precedence over the field events.

STARTING BLOCKS

If teams bring their own starting blocks, they must be approved by the referee

MARKING MATERIALS

There will be NO chalk marking or tape allowed on the runway in long jump and pole vault. We will have a tape measure secured to the runway. Any markers for these events must be OFF the runway. High jump is allowed one mark on the surface per athlete, and chalk will be provided. Chalk will also be provided for the relay teams to mark their start/takeoff on the track.

SPIKES

Quarter inch pyramid spikes only!!!!!!!!!!!!!!

ENTRIES

Entries are due on Tuesday, May 17th at 11:59pm. Your entry consists of your Master Eligibility list (sent, faxed, emailed to our school) and meet entries entered at athletic.net. Entries must be FAT or converted to FAT by rounding up a hand time to the higher tenth and then adding .24 to a hand time. For example, a hand time of 26.63 must be converted to 26.7 and then .24 added for an entered time of 26.94.

For **meet related questions** you may e-mail Tom Oestrike at thomas.oestrike@hazelparkschools.rog or call 734-347-3530

For **entry related questions** can be submitted to Kevin Behmer at a2racemanagement@gmail.com or call 734-945-8548.

TENTS

Will be placed on the Practice Food field- Directly west of the track. Please see the map attached. NO STAKES ON THE PRACTICE FOOTBALL FIELD AS IT IS TURF. PREPARE TO USE WEIGHTS TO HOLD YOUR TENT DOWN.

LOCKER ROOMS

Locker rooms WILL NOT be available to participants

TRAINER

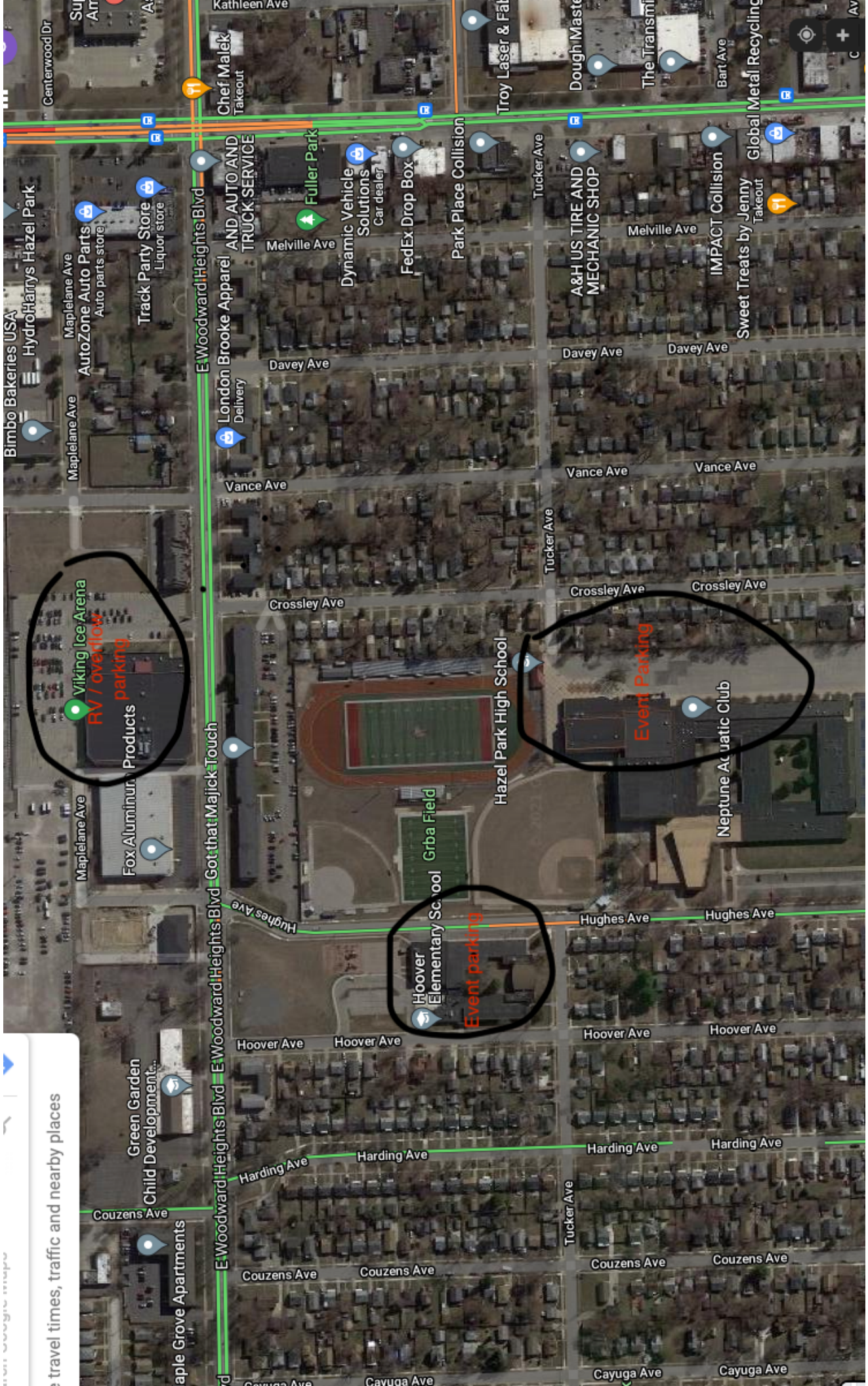
There will be a trainer at the meet, but you'll need to supply your own supplies; i.e tape.

FULLY AUTOMATIC TIMING *The meet will be fully automatic timed by A2 Race Management*

Live results link: <http://www.a2racemanagement.com/live2>

BUS PARKING: Please see the map attached, buses must be parked at the Viking Ice Arena. You may pick up

PLEASE NOTE!!!!Only athletes checking for an event or participating in an event should be on the infield. No coaches or spectators allowed on the infield. Athletes, spectators, and coaches who do not follow these rules will be asked to leave the event.



travel times, traffic and nearby places

Viking Ice Arena
RV / Overlook
parking

Event parking

Event Parking