

MHSAA 7-PERSON MECHANICS

INITIAL KEYS AND READS

FOR YOUR INFORMATION

- In each of the following slides, assume the LJ and FJ are on the PRESS BOX side of the field. This is the side where all photos are taken from.
- Do not pay attention to the position letter on the backs of these collegiate officials in the photos. In college mechanics, the HL/SJ and LJ/FJ switch sidelines at half time. Under MHSAA mechanics, the LJ/FJ will be on the press box sideline the entire game and the HL/SJ will be on the sideline opposite the press box the entire game. The HL/SJ will always be on the side of the field with the chains!

GETTING STARTED

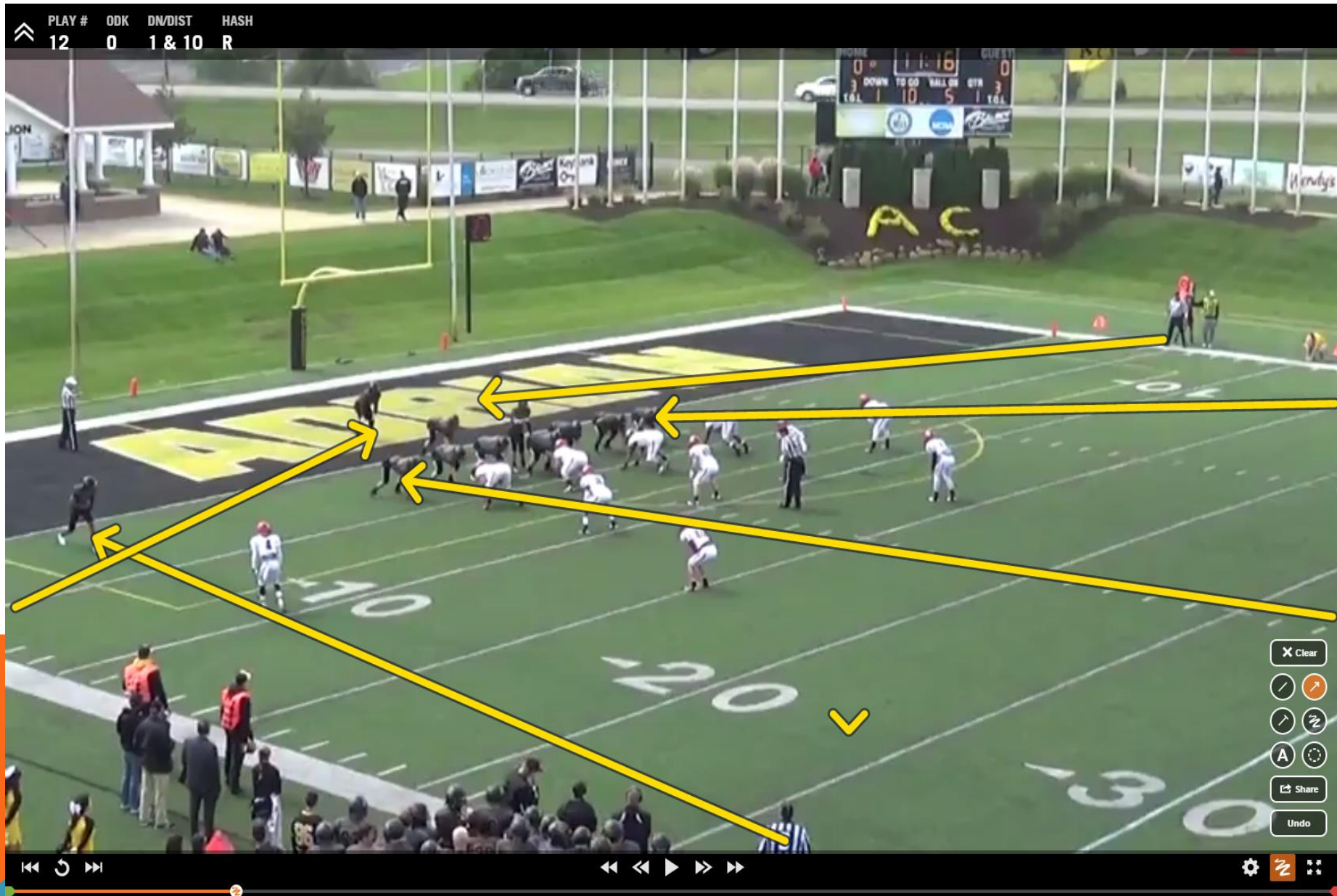
- When counting receivers, we always start from the sideline and work out way toward the middle of the field.
- When we count, we use STATIONARY RECEIVERS in the formation that are lined up outside of the offensive tackles on both sides.
- When we determine formation strength, we use the side with the greater number of stationary receivers that are lined up outside of the offensive tackles on that side.
- If the formation is balanced (same number of receivers on each side outside of the tackles) we then automatically use the press box / line judge side of the field as our strength (BJ will go in that direction).



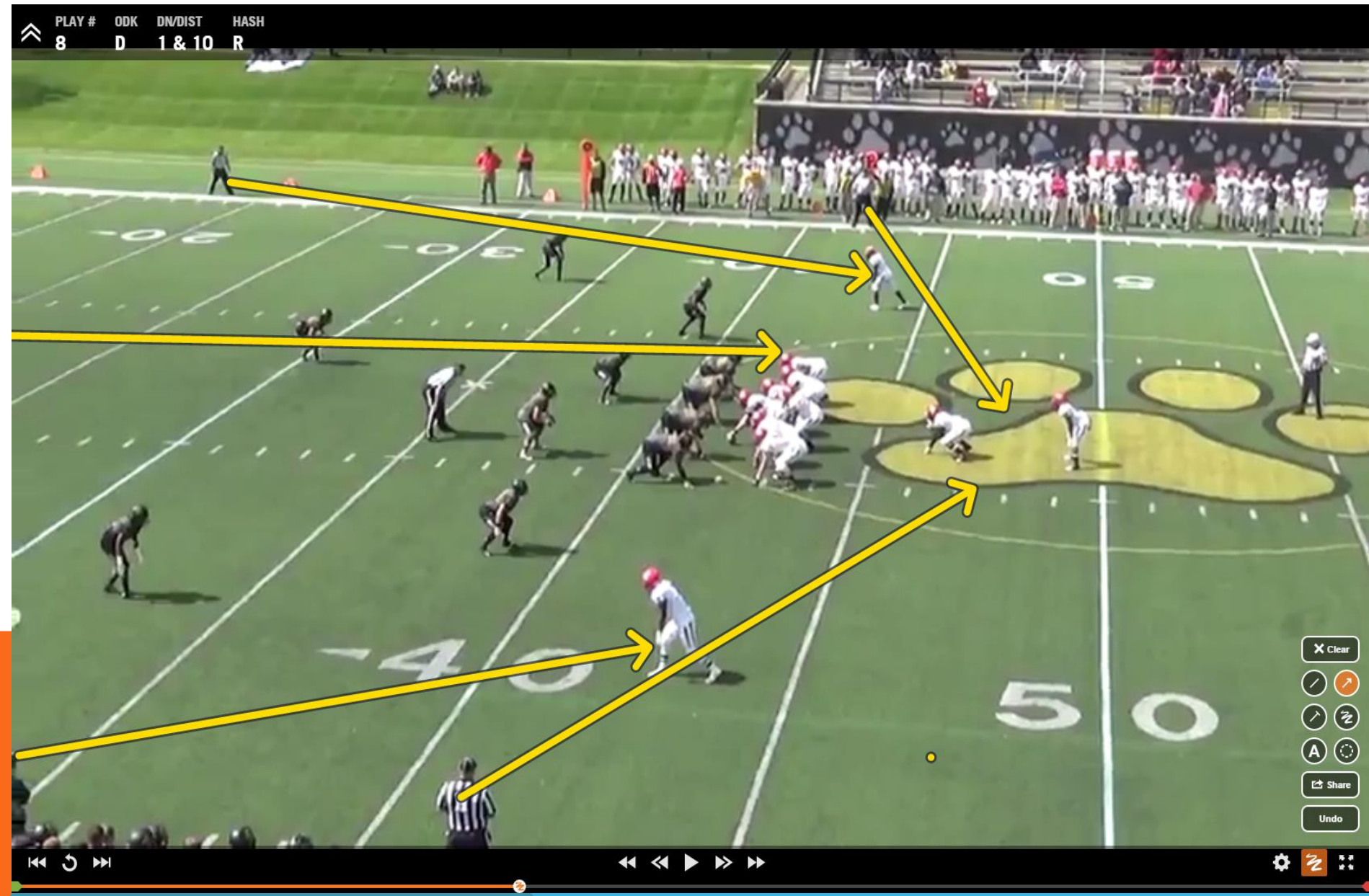
BASIC CONCEPTS, CONT.

- FJ and SJ **ALWAYS** have the widest receiver to their side.
- BJ **ALWAYS** has the #2 receiver to the strong side. If a balanced formation (2 receivers on each side), the BJ ALWAYS goes to the press box side and takes #2 to that side!
- The BJ has #2 in any TRIPS formation (slight change from college mechanics).
- The HL and LJ will always have #3 to their side if the BJ has #2 to your side. If the BJ is away from your side, you will take the #2 receiver.
- If a man goes in motion, the motion man now becomes the responsibility of the HL or LJ when he is on your side of the center. When the motion man crosses the center, he then becomes the responsibility of the other LOS official.
- When a man goes in motion, the remaining stationary players are now divided up between the BJ, FJ and SJ based on the new alignment as changed by the motion man.

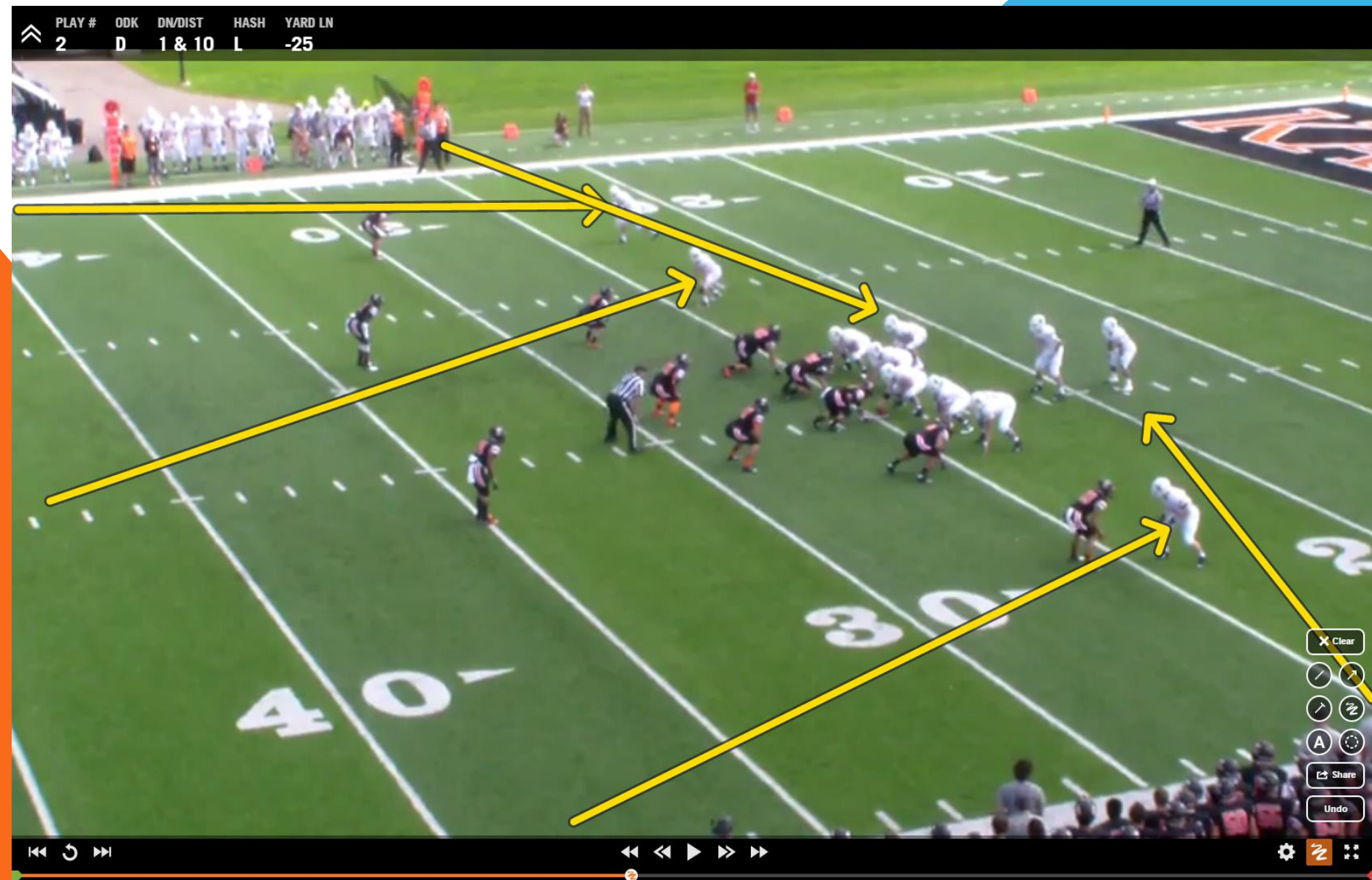
DOUBLE TIGHT ENDS!



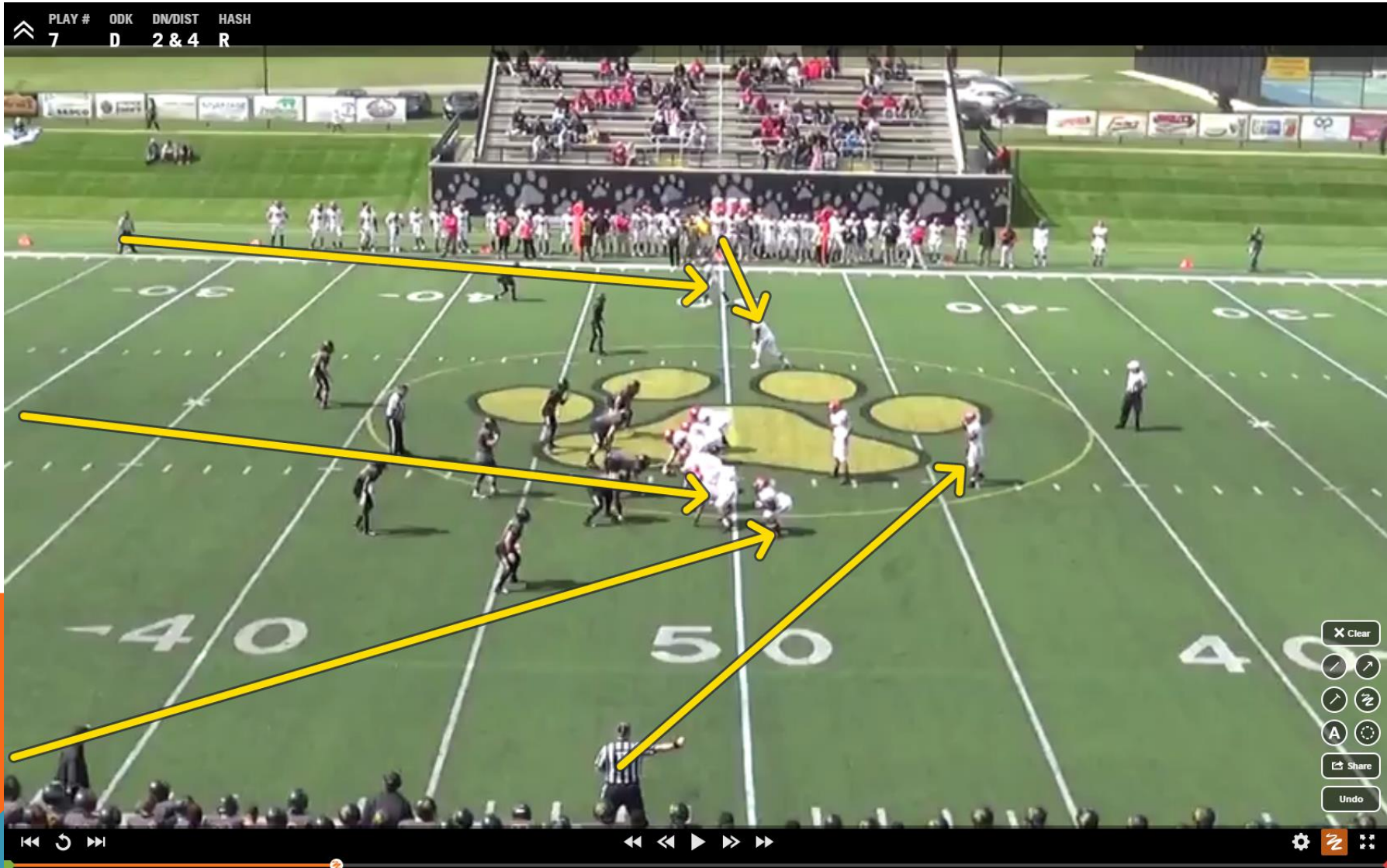
PRO, I FORMATION



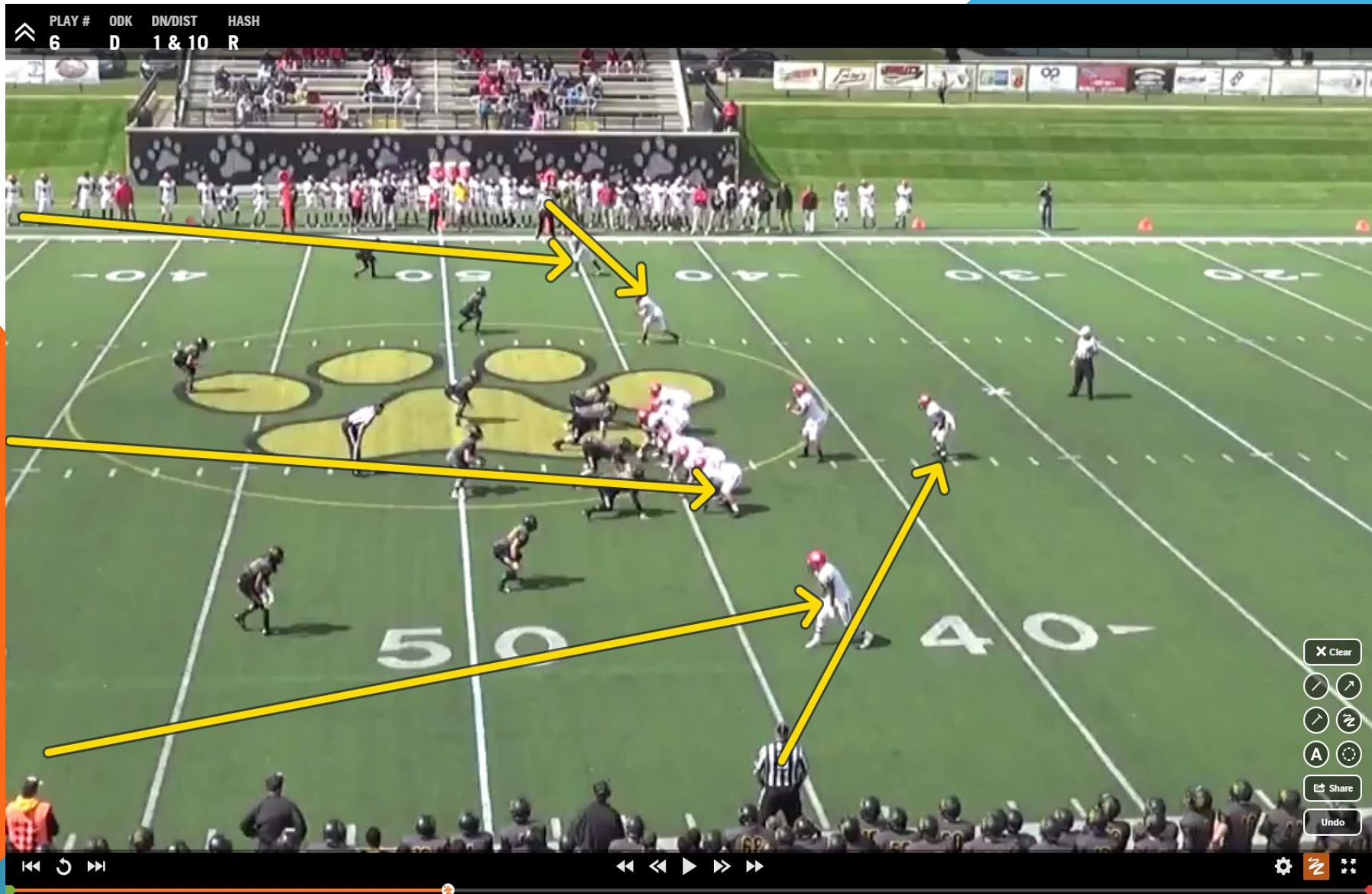
TWINS TO HL / SJ Side!



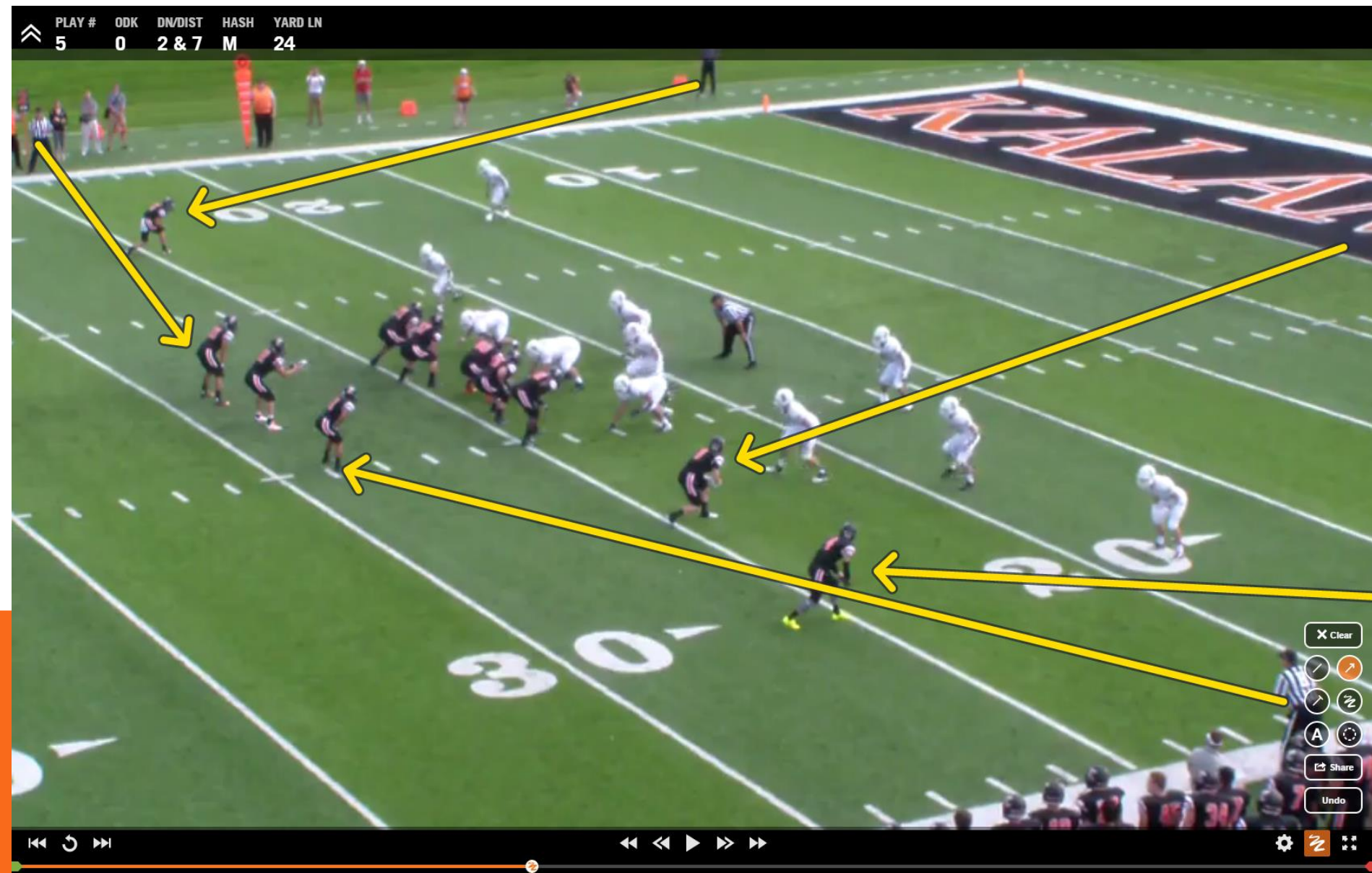
DOUBLE RECEIVERS ON BOTH SIDES- BJ GOES TO PRESS BOX SIDE!



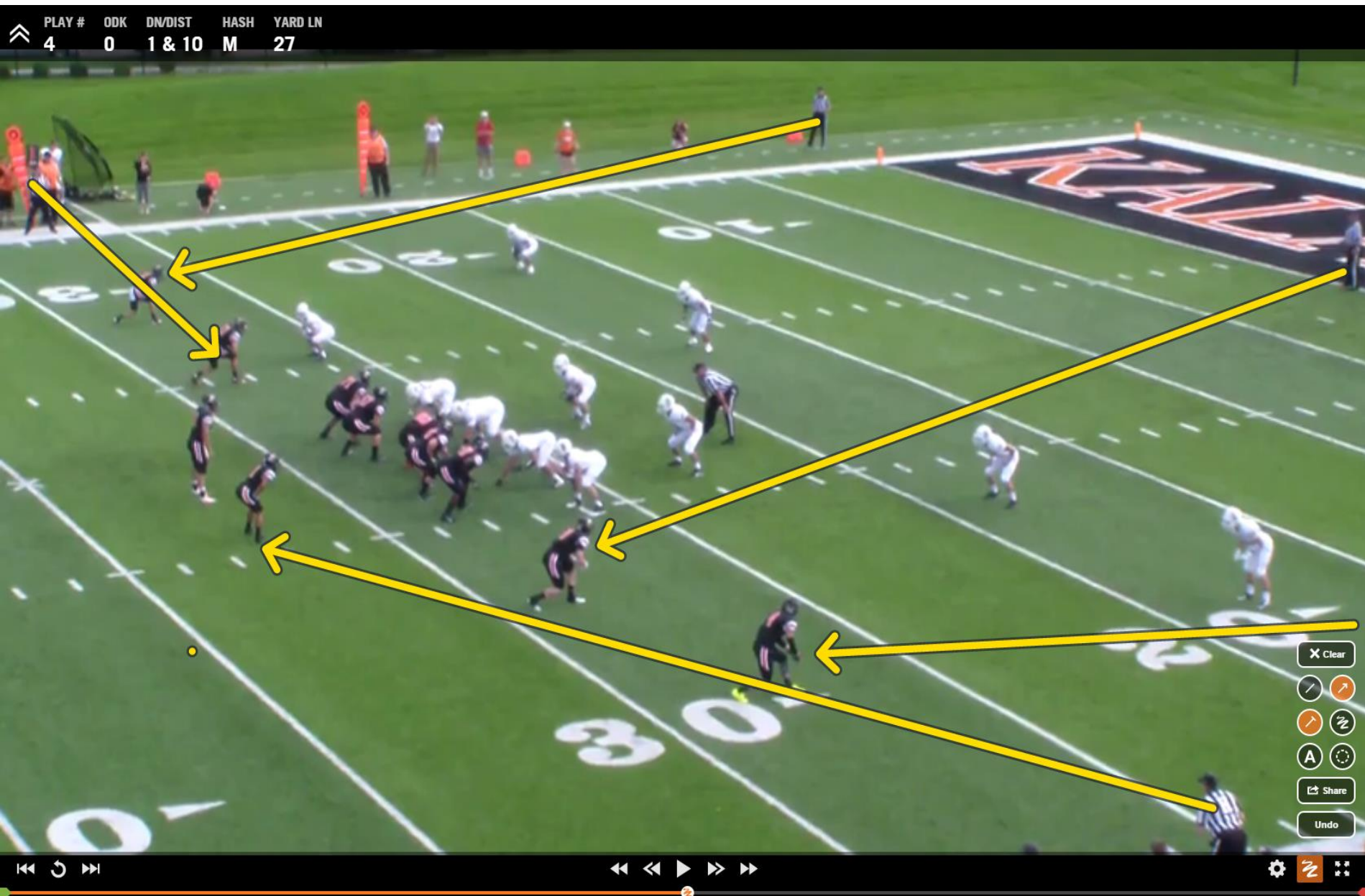
Double Receivers on Both Sides- BJ goes to Press Box Side!!!!



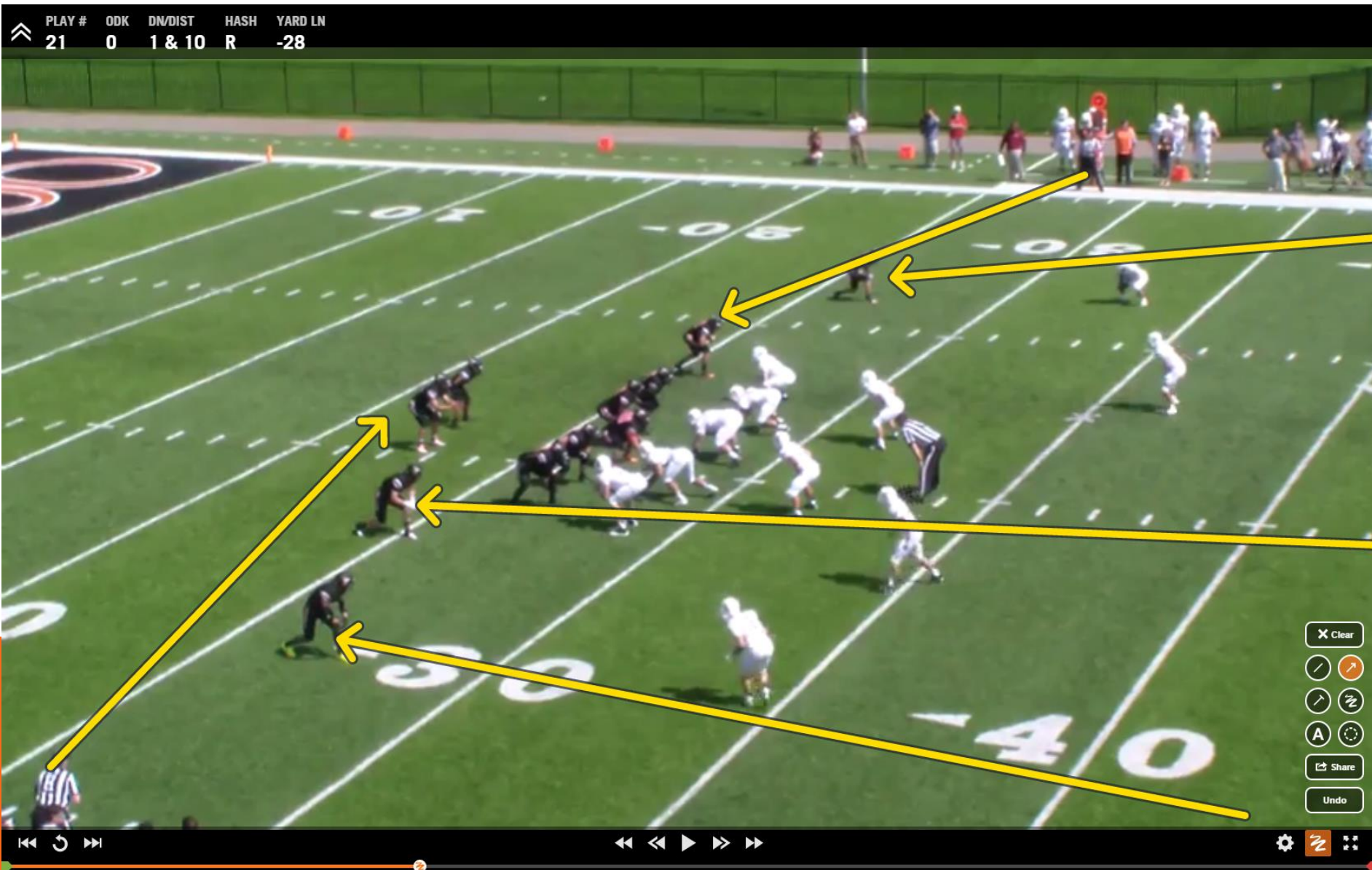
TWINS TO LJ/FJ SIDE



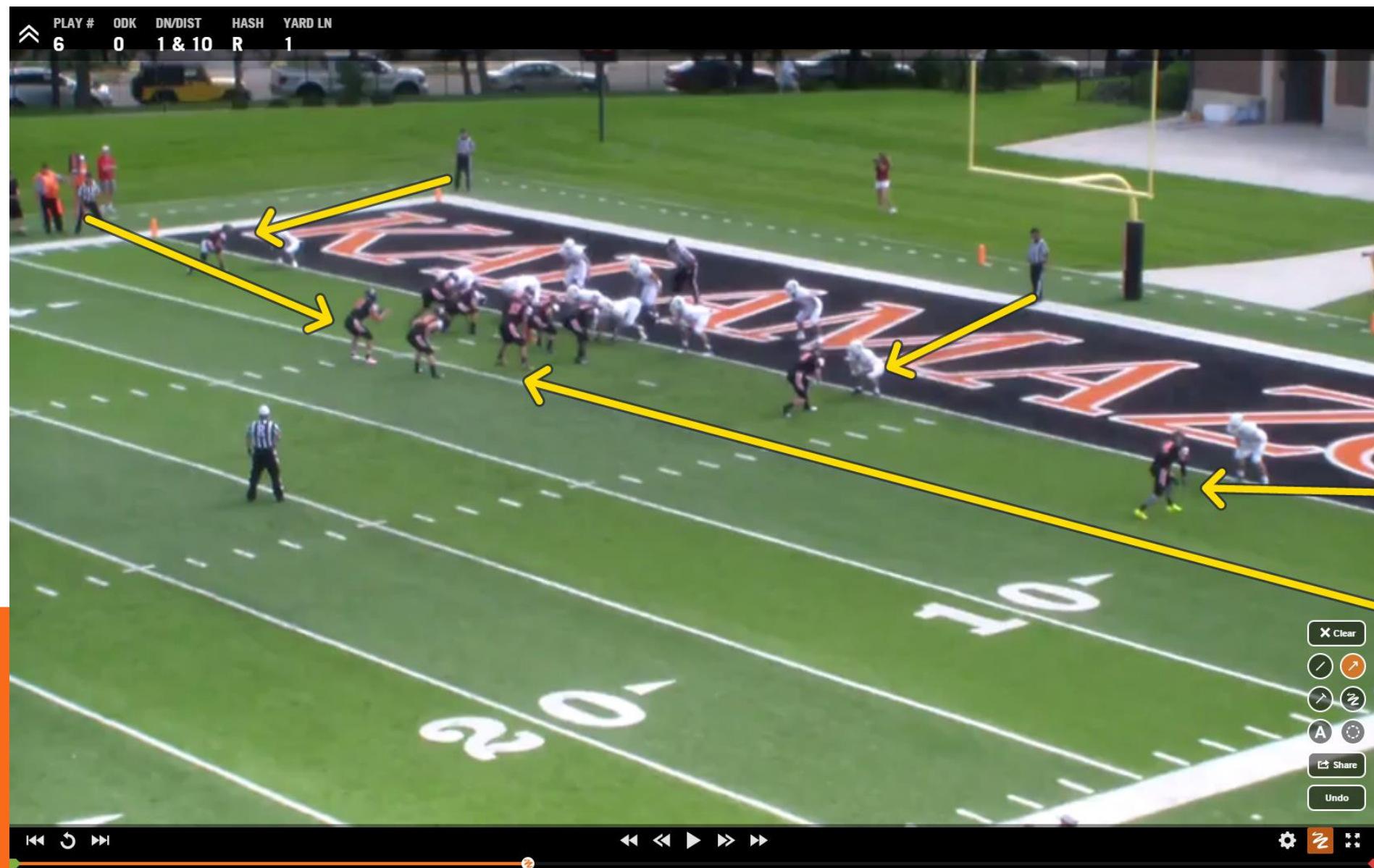
DOUBLE TWINS- BJ TO PRESS BOX SIDE!



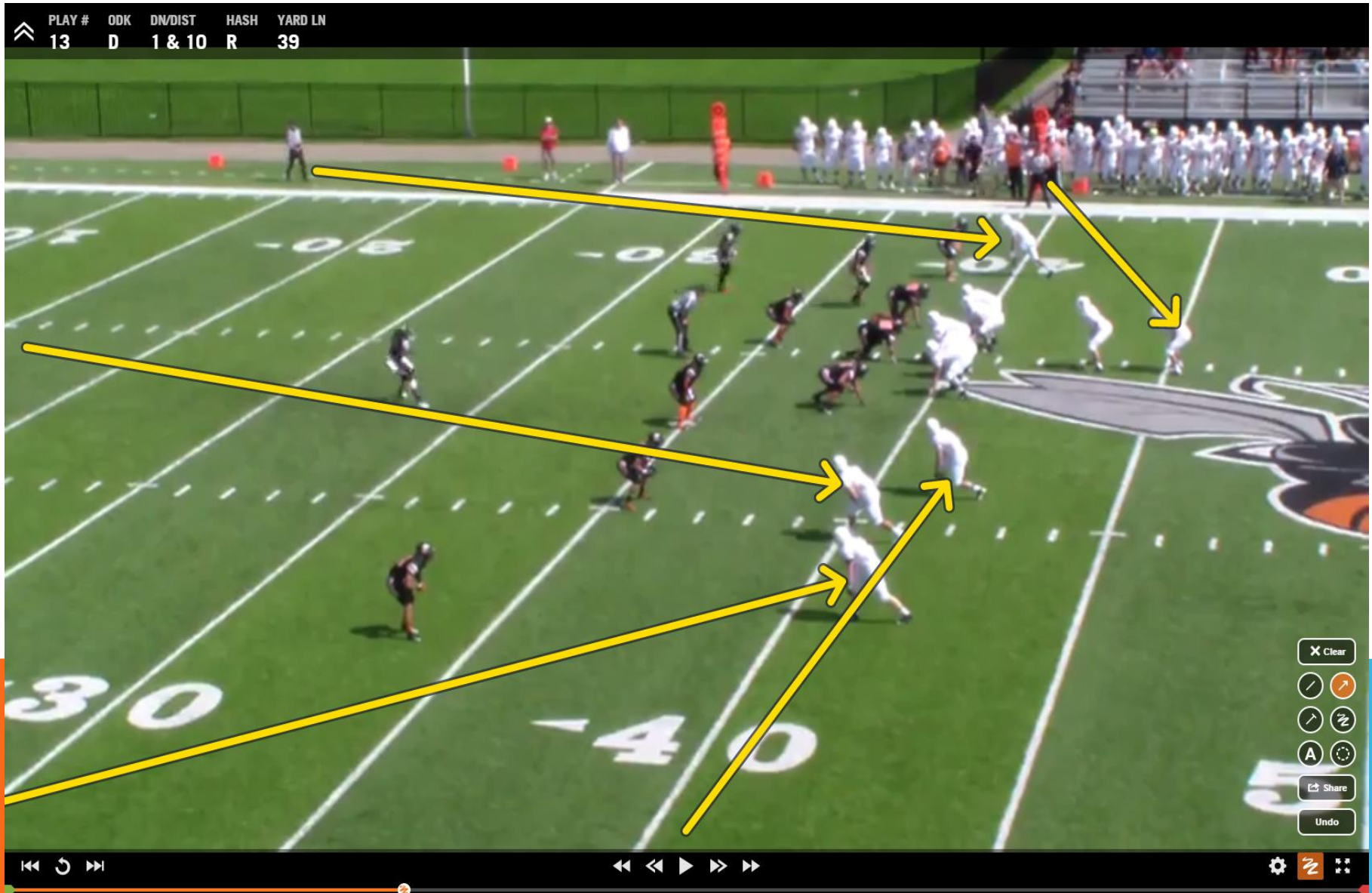
DOUBLE TWINS- BJ TO PRESS BOX SIDE!



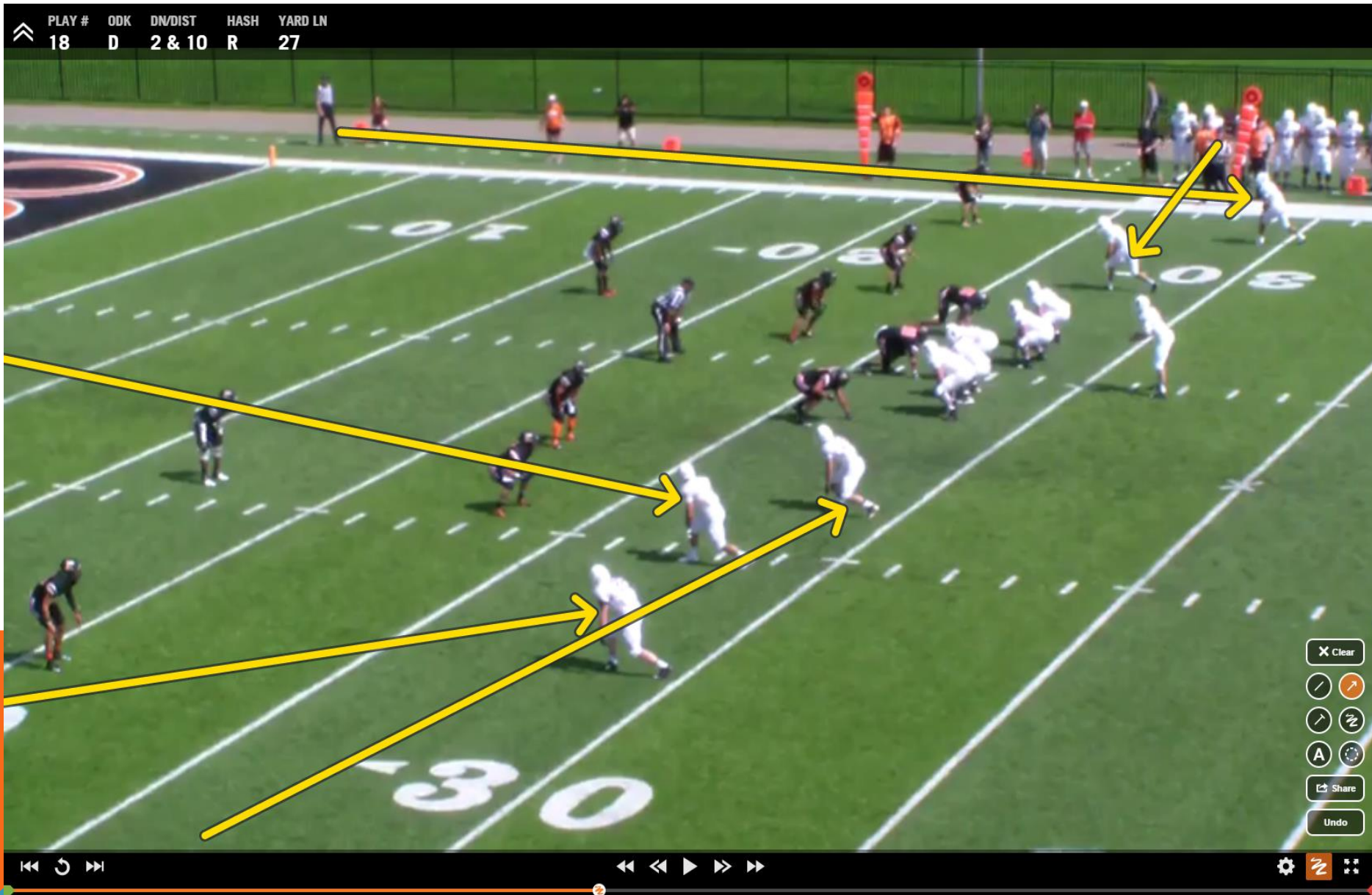
CRITICAL AT THE GOAL LINE- STAY WITH YOUR KEY! PICKS & RUBS!



TRIPS TO LJ SIDE- BJ HAS #2!



EMPTY BACKFIELD- BJ HAS #2 TO TRIPS!



QUADS- ONLY TIME BJ HAS 2 GUYS!

