



# 2022 CROSS COUNTRY FINALS INFORMATION

- **INFORMATION BULLETIN**
- **TIME SCHEDULE**
- **BOYS AND GIRLS TEAM QUALIFIER FORMS**
- Spectator admission is \$11.00 per person. Tickets must be purchased online using the GoFan digital ticketing site.
- Digital tickets will be sold via GoFan and can be found at:
  - D4/D3 AM races - <https://gofan.co/app/events/729102>
  - D2/D1 PM races - <https://gofan.co/app/events/729103>
- **TEAM PARKING** for busses will be through Parking Gate A and team entry will be at Gate 24A and Team entrance through pedestrian tunnel (see map)
- Visibly worn wristbands will allow coaches and athletes to enter the facility.
- Infield access through the tunnel gate (see map) **WILL BE** allowed for team vehicles only under 9 feet in height

**1. LOCATION: Michigan International Speedway, 12626 US-12, Brooklyn, MI 49230**

- A. All access to Brooklyn Road can be reached from the north off of M-50 or from the south off US-12.
- B. Gate A – Lot A - Team Bus Parking (**PLEASE SEE MAP FOUND ONLINE AT MHSAA.com**)
- C. The Fan Plaza will accommodate ADA parking and can be accessed by the vehicle Tunnel entrance– Team and Bus parking is accessed by the Gate A entrance. Spectator Parking may be accessed by Gate A or Gate 3C entrances.
- D. The Grandstand entrance and ticket booths will be the spectator entrance - Gate 24 – Spectators will use the Pedestrian tunnel to access the MIS infield.
- E. Teams who park outside the Grandstands will use Gate 24 to access the front stretch cross over or pedestrian tunnel to access the MIS infield and team areas. The front stretch cross over will be closed during races and only open for access before races, during the lunch break and after all races are completed.
- F. The vehicle tunnel gate will only be used for team access in vans less than 9 feet in height and only with the required team parking pass.
- G. Trams WILL BE available for transport to infield from team and spectator parking areas.

**2. FINALS QUALIFIER PACKET INCLUDES:**

- A. A parking pass, which will permit your vehicle to park in the team parking area in the Fan Plaza if desired.
- B. **TEAM QUALIFIERS:** eight (8) team member admission wristband passes, three (3) wristband passes for coach and/or trainer.
- C. **INDIVIDUAL QUALIFIERS** will receive one (1) wristband pass plus two (2) others to include coach or trainer.
- D. **Visibly worn wristbands** will allow coaches and athletes to enter the facility and allow coaches and officials access to restricted areas such as the infield and course.
- E. Team entrance/exit to the Fan Plaza parking area will be through the pedestrian tunnel or through grandstands and across track with access behind the press box in the Fan Plaza and parking areas.(Cross over track entrance/exit will be closed during races.)

**3. FINAL MEET PACKET PICK UP /APPAREL PURCHASE**

- A. Friday packet pick up will be at Michigan International Speedway in the **MICHIGAN ROOM from 12 p.m. to 5 p.m.** and starting at 7:30 a.m. on race day and throughout the day of the race.
- B. Course preview from the starting line to the 3 mile mark (right around where pit row begins) will also be allowed from 12 p.m. to 5 p.m. only on Friday, November 4th – Weather permitting.
- C. No tents or vehicles may be left in the infield of MIS and the track must be cleared by 5 p.m. for course set up and preparation.
- D. Parking for the Friday packet pickup and course preview time will be done in the awards area and lots closest to pit row or in the Fan Plaza by way of the Pedestrian Tunnel or Cross over track entrance outside of Gate 24. (PLEASE SEE MAP ONLINE at MHSAA.com)
- E. Apparel sales from EA GRAPHICS will take place on Friday from 12 p.m. to 5 p.m. and on Saturday from 8 a.m. to 4 p.m.
- F. Saturday packet pickup will start at 7:30 a.m. in the **MICHIGAN ROOM** located in the buildings behind the finish area and by pit row.

- G. It is the responsibility of the coach to pick up the meet packet and timing tag on either Friday or Saturday.
- H. Box assignments will be posted online at MHSAA.com as well as in the MICHIGAN ROOM.

#### **4. CHANGE AND CORRECTIONS FORM**

- A. Individual qualifiers may not be substituted.
- B. Coaches of team qualifiers may change team personnel for the Finals if those student-athletes appear on the school master eligibility list.
- C. Roster Changes, including spelling, grade corrections, individual scratches, and team substitutions, may be done by the coach through [athletic.net](http://athletic.net) PRIOR to Monday, October 31 at 9 p.m. Any changes after Monday, October 31, will not make the MHSAA Finals program and will not be reflected in the registration packet. Following the Monday, October 31, 9 p.m. deadline, all further changes must be made using [THIS FORM](#) (also found online at MHSAA.com on the XC page)
- D. Paper substitution forms will be available at packet pick up. The Google change form [THIS FORM](#) (the preferred method) will also be active through the change deadline.
- E. Division 4 and 3 teams must make their changes by 9 a.m. on Saturday, Nov. 5.
- F. Division 2 and 1 teams must make their changes by NOON on Saturday, Nov. 5.
- G. Please ensure to meet and follow the changes and corrections deadlines for each team's race. Late substitutions may be accepted up to 5 minutes before the start of each race. A late substitution is one after the published deadline has expired. A coach can then turn in a change form and \$20 to the timer/scorer if this option is needed. The head official at the start line (start platform) will accept these changes up to 5 minutes prior to the race start and the timer/scorer will change prior to the results being made official. Failure to have an athlete's bib changed properly is a basis for disqualification.
- H. Turn the Change and Corrections Form into the packet pick-up area at the Michigan Room.

#### **5. COURSE DESCRIPTION AND PREVIEW**

- A. While the start and finish have restricted areas, coaches and officials will be allowed along the course during races.
- B. The entire course will be open for previewing on Friday, November 4 from 12 p.m. to 5 p.m. and prior to your race on Saturday. Please be aware of races and other racers. The final 160 meters can be reviewed from just off the course on Friday and Saturday.
- C. Competitors and coaches may not be able to preview the course after the three-mile mark on Saturday, November 5.
- D. Please do not cross the timing pads at the one-mile, two-mile, and three-mile marks, while previewing the course prior to your race.
- E. Mile markers and timing clocks will designate the one-mile, two-mile, and three-mile marks. As a reminder, the timing split @ the 3-mile mark is NOT the finish and athletes need to continue to the Finish line.
- F. The use of a painted boundary lines, both inside and outside, will define the course. Additionally, artificial boundary markers, such as orange barrels may also be used. Athletes should stay between these lines and must go around all other natural or man-made barriers.
- G. Additional flagging may be posted throughout the course: "Red to left", "Yellow to right" and "Blue straight"
- H. Runners must cross both finish line timing pads and continue through the chute.

#### **6. COMPETING TEAM EXPECTATIONS**

- A. Schools will defray their own expenses for participating in the Finals.
- B. Coaches and other school officials are responsible for the supervision of team members at the Final site.
- C. If extra credentials are needed and approved by the MHSAA, this pick up will be outside of MIS in the Fan Plaza at a pass table.
- D. Wristbands are allowed for competitors, alternates, and school approved coaches only. Any violation of this policy will result in future restrictions on wristbands and passes for that school and coach.
- E. Please help clean up the team area by using the supplied trash receptacles. Please bring out what you bring in.
- F. It is suggested that you arrive at least one hour prior to race time to ensure adequate prep time, race packet pick up, team warm up and start line check in.
- G. Racers (teams and individuals) should be at the start line no later than 15 minutes prior to their race time for check in.
- H. Coaches should ensure and are responsible for their runner or team showing up in the correct division and race using the attached race schedule.

## 7. **TIMING, SCORING AND RESULTS**

Timing and scoring will be administered by Superior Timing.

### Race Bibs

- A. Runners must wear their assigned race bib on the front **and back** of their jersey with the pins provided. The bib colors are Blue for team and Red for individual runners.
- B. Race bibs may **not** be altered (i.e. cut, folded, wrinkled, etc.)
- C. The race bib will be the primary timing system for a runner.

### Scoring and Ties

- A. Rule 8, Section 2 and 3 of the National Federation Track & Field/Cross Country Rule Book will be followed.
- B. All competitors are expected to move beyond the finish line and run/jog to their position in the exit area.
- C. Timing tags on bibs are the primary system and a camera video replay system is the back up.

### Results

- A. Preliminary results will be posted on [superiortiming.com](http://superiortiming.com). A result may be appealed for review for 20 minutes after posting and thereafter becomes official.
- B. Official Results will then be posted at [MHSAA.com](http://MHSAA.com) and [Athletic.net](http://Athletic.net) immediately after the race appeal time frame is completed. Split times will be available [superiortiming.com](http://superiortiming.com)
- C. Written appeals can be done via a written appeals form found in the Michigan Room (packet pick up). It can be turned in during the appeal period at this same location to meet officials.
- D. Online live timing and live team results will be posted online at [MHSAA.com](http://MHSAA.com) and at <https://www.superiortiming.com/>
- E. XC Finals Live timing and scoring is available at [www.superiortiming.com](http://www.superiortiming.com) during each race. Races will be based upon an image-based system and each place verified.

## 8. **AWARDS**

- A. Each division and gender:
  - 1 Trophy First Place – Team    1 Trophy Second Place - Team
  - 7 Medals First Place – Team    7 Medals Second Place - Team
  - 30 Medals - Top 30 Finishers overall in a Division.

- B. Teams (top 2 in each race) and their coaches, as well as Individual award winners (TOP 30) who qualify for an award – either a trophy or medal should come to the MICHIGAN ROOM for awards staging at least 15 minutes prior to the awards ceremony start time.
- C. Division 4 & 3 awards will begin at 12:15 p.m.
- D. Division 2 & 1 awards will begin at 4:00 p.m.

## 9. COMPETITION RULES & INSTRUCTIONS

### STARTING LINE:

- A. Pre-race uniform and bib checks will be done 15 minutes prior to each race. Teams should be at the line for this required check.
- B. Final race instructions will be given five minutes prior to each race. At the conclusion of those instructions, athletes should remove their sweats and immediately report to the assigned positions on the starting line weather permitting.
- C. Teams and individuals must use the assigned starting boxes unless reassigned a box by meet administration or officials because of race course conditions.
- D. The assigned box is the box that must be used and moving to another box without an official determining that the move would be allowed would be grounds for disqualification.

### TEAMS:

- A. Qualifying teams may compete with a maximum of seven entries and a minimum of one entry.
- B. At least five individuals must finish to be considered a complete team.
- C. Individuals on the Master Eligibility List may be used as substitutes for team entries only. There are no substitutions for racers in the individual races.

JEWELRY: Athletes may wear jewelry during competition without penalty. This includes watches and sunglasses.

HEAD ATTIRE: The only head attire that may be worn during competition will be a knit stocking cap, sweat band, ski band, hats with bills (baseball style) or the hood of a one-piece uniform without regard to color or design.

UNIFORM RULE: National Federation Rule 4-3 will be enforced as written regarding competitor uniforms.

MHSAA XC Rule Adaptations: Should the uniform jersey hang below the waistband of the shorts, jerseys must be tucked in.

Competitors may **not** wear temporary body adornment (painted or fastened) during competition

A bib may not be obstructed to stop a watch and could lead to a runner not being given a place or time. Please advise your athletes to wait until after the finish line to stop their watches.

Referees/umpires/meet monitors throughout the course will be watching competitors closely for rules of the course and sportsmanship compliance.

Coaches or others may not use bikes or other means of artificial transportation at MIS.

## 10. APPEALS

- A. Appeals in writing denoting a rule or missed athlete will first come to the games committee before making the final decision on any appeal. The length of the appeal time is 20 minutes after the posting of results online.
- B. The Games committee shall have final authority over rules disputes.

### Games Committee:

Rudy Godefroidt, ATOM, official's coordinator, Meet Referee  
Doug Kelly, Meet Monitor  
Cody Inglis, MHSAA XC Director  
Brad Buter, Meet Manager  
Two Coaches Representatives

## 11. MEDICAL INFORMATION

- A. A doctor, seven certified athletic trainers, and student athletic trainers will be on duty during the day to assist with any injuries or emergencies.
- B. In addition, the Michigan Speedway infield Hospital will be open and there will be an at least two ambulances with EMT's on stand-by.

## 12. DIGITAL TICKETING INSTRUCTIONS – GO FAN –

- A. **Tickets are \$11.00 for all spectators. There will be NO CASH purchases for on-site ticket purchase, all ticket purchases must be done via gofan.co**

**Digital tickets will be sold via GoFan and can be purchased at:**

**D4/D3 AM races - <https://gofan.co/app/events/729102>**

**D2/D1 PM races - <https://gofan.co/app/events/729103>**

1 minute YouTube Go Fan Digital Ticketing Training Videos

These one-minute training videos will give you a glimpse into the simplicity of GoFan. Please look them over if you have questions regarding Go Fan

[How to buy tickets](#)

[How to use tickets](#)

[How to access and share tickets](#)

[How to find your tickets](#)

FAQ's regarding GoFan digital ticketing and Cross Country Finals:

### **How many tickets can be purchased?**

There is no limit to the number of tickets that can be purchased for the MHSAA Cross Country Finals in 2022.

### **How do spectators view their purchased tickets?**

They can click "View Tickets" in their emailed receipt, sign in to their Go Fan account, or open in the GoFan app. For fastest entry into the game, fans should pull up their tickets prior to reaching the gate. Here is another one-minute video that can help with this process.

<https://www.youtube.com/watch?v=H0Xhso4QobA>

### **Can fans transfer tickets to others?**

Yes, purchased tickets can be transferred to children, spouse, family or anyone else via text, email or copying a link. See the video above.

### **Can spectators buy tickets at the gate?**

YES, it is very easy. Go to **gofan.co** on your phone, search for MHSAA Cross Country Finals, click on that event, and purchase the ticket. If you can't purchase via a phone you can use a credit/debit card at the gate.

### **13. SPECTATOR INFORMATION**

- A. \$11 admission charge for all spectators. There is no parking fee.
- B. All tickets **must be** purchased via the Go Fan app or website. **There will be NO CASH purchases for on-site ticket purchase, all ticket purchases must be done online.**
- C. The ticket area to the grandstand (Gate 24A) will be the entrance this year at MIS.
- D. Spectators will be allowed access to MIS via the Pedestrian Tunnel located immediately after entry. The pedestrian tunnel goes under the track and allows access to the infield area and course viewing. Grandstand access is also allowed at MIS for the 2022 XC Finals from section 2 to 20.
- E. Animals will not be allowed to enter Michigan International Speedway, pets (even on leashes) will not be allowed unless proper documentation can support a service animal designation.
- F. Trams will be available in 2022 for spectators. ADA accessible parking and transportation inside of MIS will be available in the spectator parking area. (See attached map.)
- G. DRONES ARE NOT ALLOWED AT Michigan International Speedway except for official MHSAA filming and streaming. Charcoal/Gas Grills are not allowed on infield parking areas. NO bikes or other means of artificial transportation are allowed at MIS.
- H. Suites will be available in 2022. More information can be found online at MHSAA.com on the Cross Country pages. Suites along pit row and in the upper press box may be purchased through MIS. More information is available online at MHSAA.com.
- I. MHSAA Apparel -T-Shirts/Sweatshirts –T-shirt and apparel sales will be at Michigan International Speedway near the Packet pickup location for teams and in the Fan Plaza entrance for spectators.
- J. MHSAA livestreaming/announcing of the XC Finals will be available. For more details please go to MHSAA.com and the XC Finals page.
- K. XC Finals Live timing and scoring is available at [www.superiortiming.com](http://www.superiortiming.com) during each race. Races will be video reviewed. The chip time will be shown in tenths, while the video reviewed and potential corrected time will show in hundredths.

### **14. UNMANNED AERIAL VEHICLE (DRONE) POLICY**

The use of unmanned aerial vehicles ("UAV"), also known as drones, is prohibited for any purpose by any persons at MHSAA tournament venues. Tournament management shall refuse admission or entry to anyone attempting to use a UAV; and if necessary, tournament management shall remove anyone attempting to use a UAV and/or confiscate the UAV until the event has been completed. For purposes of this policy, a UAV is any aircraft without a human pilot aboard the device.

An exception to this policy may be made in specific cases for MHSAA broadcast partners, provided the management of the tournament facility permits the presence of UAVs for broadcast purposes under the control of the MHSAA.

### **15. TOBACCO AND ALCOHOL POLICY**

Use of alcohol or tobacco, including e-cigarettes or other smoking devices, is prohibited at MHSAA tournament events by players, coaches and spectators.

**Turn in to packet pick-up room (Michigan Room)**  
**Changes and Corrections due 9:00 a.m. for D4 and D3 races**  
**Changes and Corrections due 12:00 p.m. for D2 and D1 races**

***CHANGES AND CORRECTIONS ONLY***

**MHSAA CROSS COUNTRY CHAMPIONSHIPS  
TEAM QUALIFIERS**

**Change in Runners:**

Please fill out this sheet if you will be making any changes in your team personnel.

SCHOOL \_\_\_\_\_

**Division:** 1   2   3   4   Circle proper division and gender   **Gender:**   **BOYS**   **GIRLS**

**SUBSTITUTIONS FOR TEAM QUALIFIERS**

<b>Bib No</b>	<b>Removed runner – Last Name, First Name</b>	<b>Grade</b>	<b>New Runner – Last Name, First Name</b>	<b>Grade</b>

**COACHES NAME:** \_\_\_\_\_

**COACHES CELL #** \_\_\_\_\_

Please ensure to follow the changes and corrections deadlines for each team's race. **Late substitutions may be accepted up to 5 minutes before the start of each race. A late substitution is one after the published deadline has expired.** A coach can then turn in a change form and \$20 to the timer/scorer if this option is needed. The head official at the start line (start platform) will accept these changes up to 5 minutes prior to the race start and the timer/scorer will change prior to the results being made official. Failure to have an athletes bib changed properly is a basis for disqualification.





MICHIGAN INTERNATIONAL SPEEDWAY  
SCHEDULE:

MIS WILL BE OPEN FROM 12  
PM TO 5 PM ON FRIDAY FOR  
PACKET PICKUP, COURSE  
PREVIEW AND APPAREL

**FRIDAY, NOV. 4**

12:00-5:00 pm      Packet Pick-Up, Course Preview and T-shirt sales  
at Michigan International Speedway.

**SATURDAY, NOV. 5**

7:30 am      Entrance Opens (Packet pick-up, T-shirt sales and course review)  
9:00 am      Changes and Corrections due for D4 and D3  
9:30 am      Division 4 Boys  
10:10 am      Division 3 Boys  
10:50 am      Division 4 Girls  
11:30 am      Division 3 Girls  
12:00 pm      Changes and corrections due for D2 and D1  
12:15 pm      Division 4 & 3 Awards Presentation  
1:30 pm      Division 2 Boys  
2:10 pm      Division 1 Boys  
2:50 pm      Division 2 Girls  
3:30 pm      Division 1 Girls  
4:00 pm      Division 2 & 1 Awards Presentation

- Spectator admission is \$11 per person via Go Fan digital ticketing.
- Digital tickets will be sold via GoFan and can be purchased at:  
D4/D3 AM races – <https://gofan.co/app/events/729102>  
D2/D1 PM races <https://gofan.co/app/events/729103>





CC-4

# CROSS COUNTRY APPEAL FORM

1. Appeal is to reverse a ruling or correct an error.
2. Protest is to express dissatisfaction with a decision or procedure.
3. The rules address the appeal process, not "the protest".

## WHAT IS SUBJECT TO APPEAL?

1. Misapplication of a rule.
2. Clerical errors in placing or a missed athlete (20 min. Limit).
3. Team scoring errors (48 hour limit).
4. Misapplication or failure to follow a procedure in the terms and conditions of competition announced in advance.

## WHAT IS NOT SUBJECT TO APPEAL?

1. Judgment decisions.
2. Decision by finish judges/timers that does not involve misapplication of a rule.

## WHAT IS THE APPEAL PROCESS?

1. Head coach shall verbally inform meet monitor.
2. Head coach shall file in writing on the Appeal Form.
3. Include competitor name, school, number, and specific event.
4. The specific rule.
5. A brief description.
6. Give form to meet monitor.

(PLEASE PRINT)

EVENT \_\_\_\_\_

INDIVIDUAL \_\_\_\_\_  
# \_\_\_\_\_

RULE  
REFERENCE \_\_\_\_\_

DESCRIPTION OF THE APPEAL:

IS JURY OF APPEALS REQUESTED TO  
REVIEW THIS ISSUE?

☐ NO

☐ YES

The Jury of Appeals shall have the final  
authority.

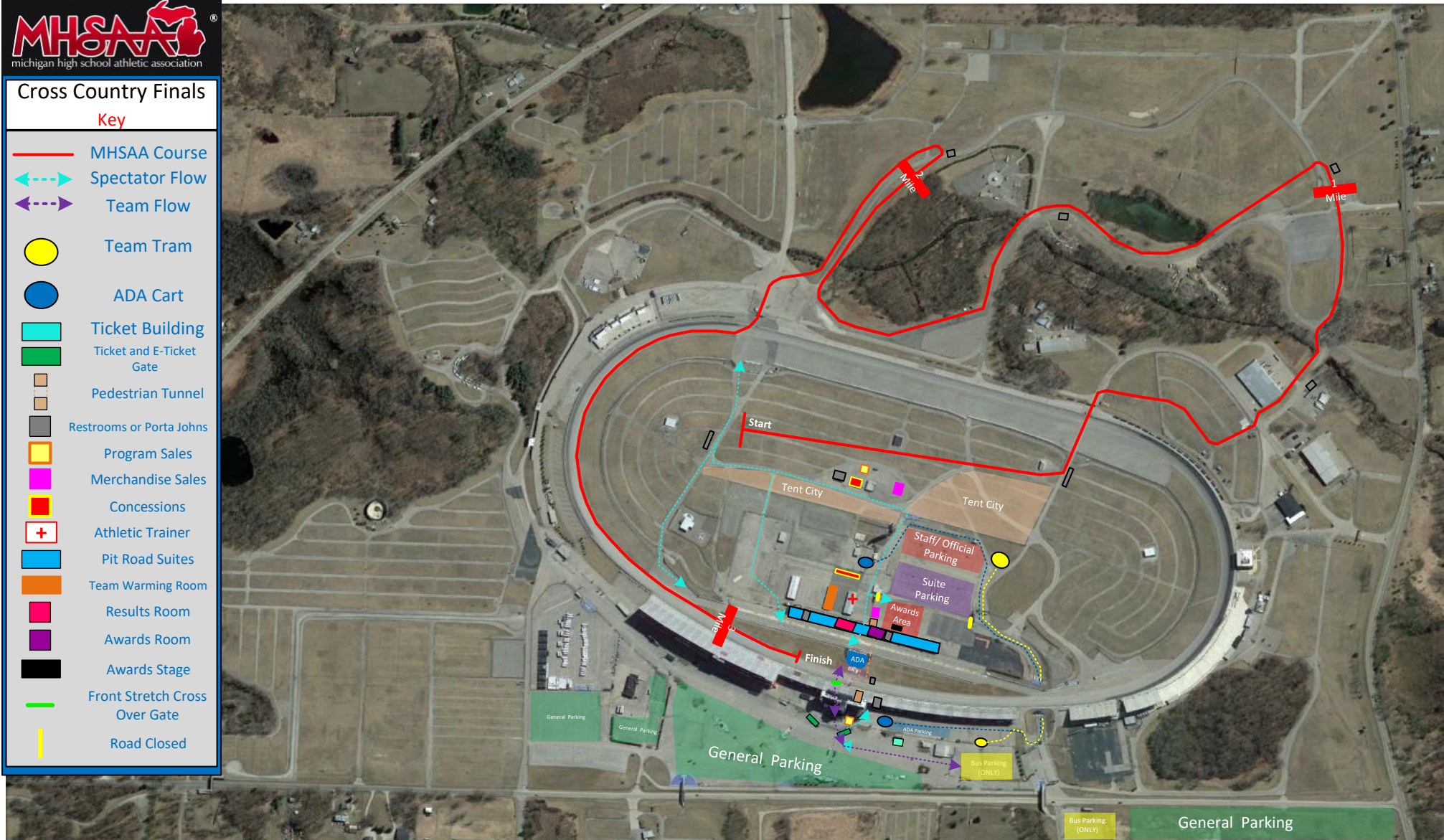
# 2022 MHSAA Cross Country Finals



## Cross Country Finals

### Key

- MHSAA Course
- Spectator Flow
- Team Flow
- Team Tram
- ADA Cart
- Ticket Building
- Ticket and E-Ticket Gate
- Pedestrian Tunnel
- Restrooms or Porta Johns
- Program Sales
- Merchandise Sales
- Concessions
- Athletic Trainer
- Pit Road Suites
- Team Warming Room
- Results Room
- Awards Room
- Awards Stage
- Front Stretch Cross Over Gate
- Road Closed





# 2022 MHSAA Cross Country Finals

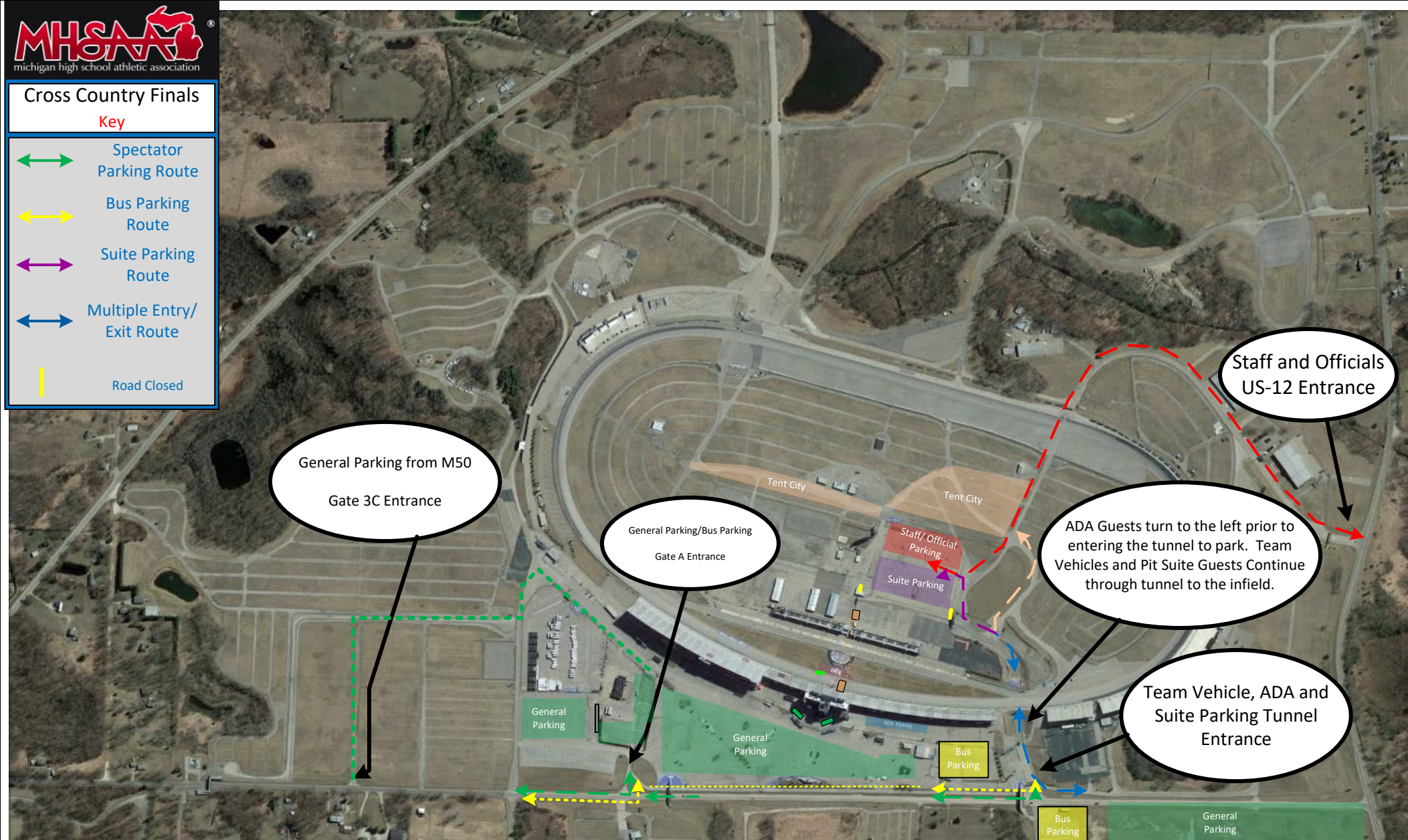
## Parking and Entry Routes

**MHSAA**  
michigan high school athletic association

**Cross Country Finals**

**Key**

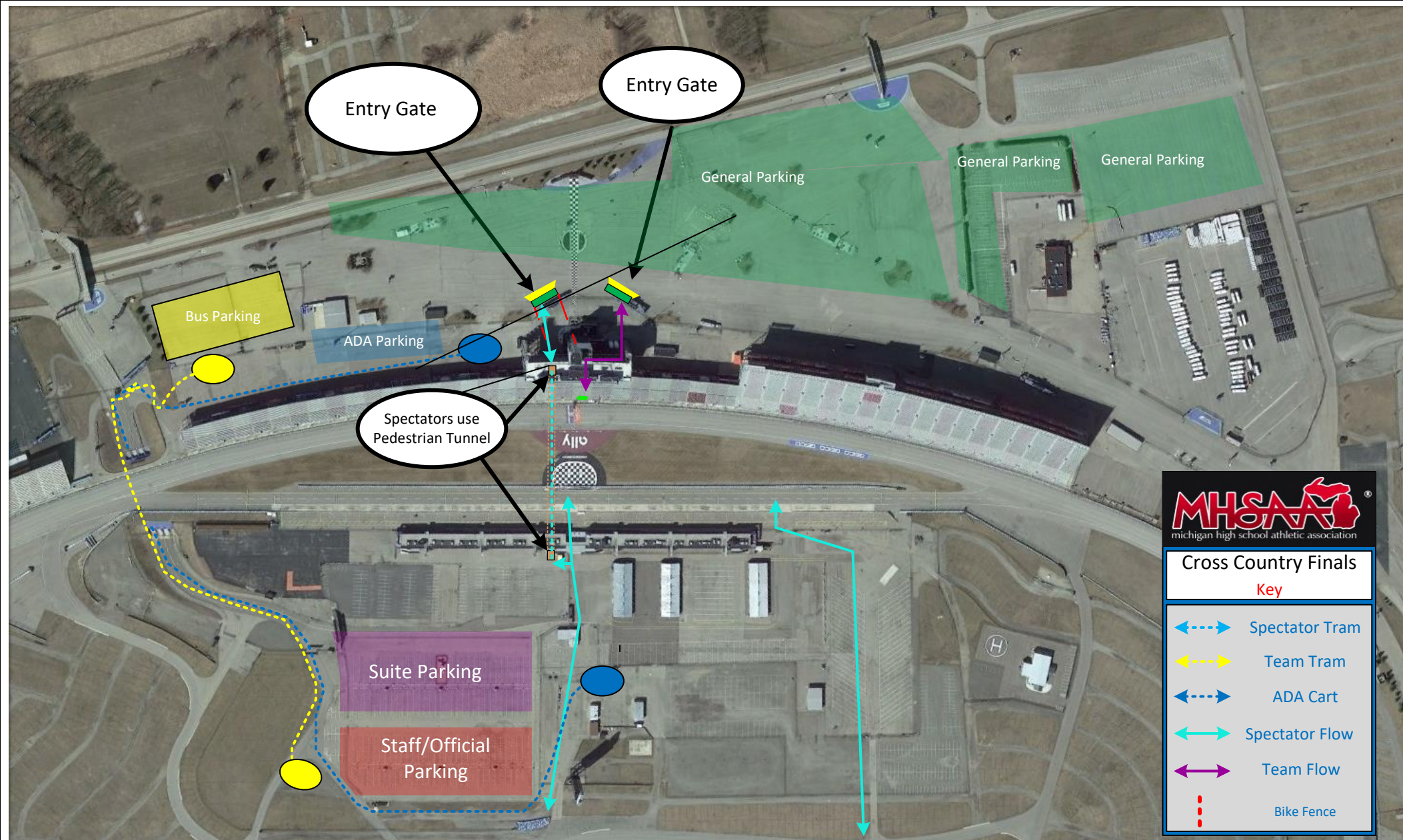
- Spectator Parking Route
- Bus Parking Route
- Suite Parking Route
- Multiple Entry/Exit Route
- Road Closed





# 2022 MHSAA Cross Country Finals

## Entry Gates & Onsite Transportation





# 2022 MHSAA Cross Country Finals

## Grandstand Seating





# 2022 MHSAA Cross Country Finals

## Pit Road Suite & Garage Area

