



Spectator Directions

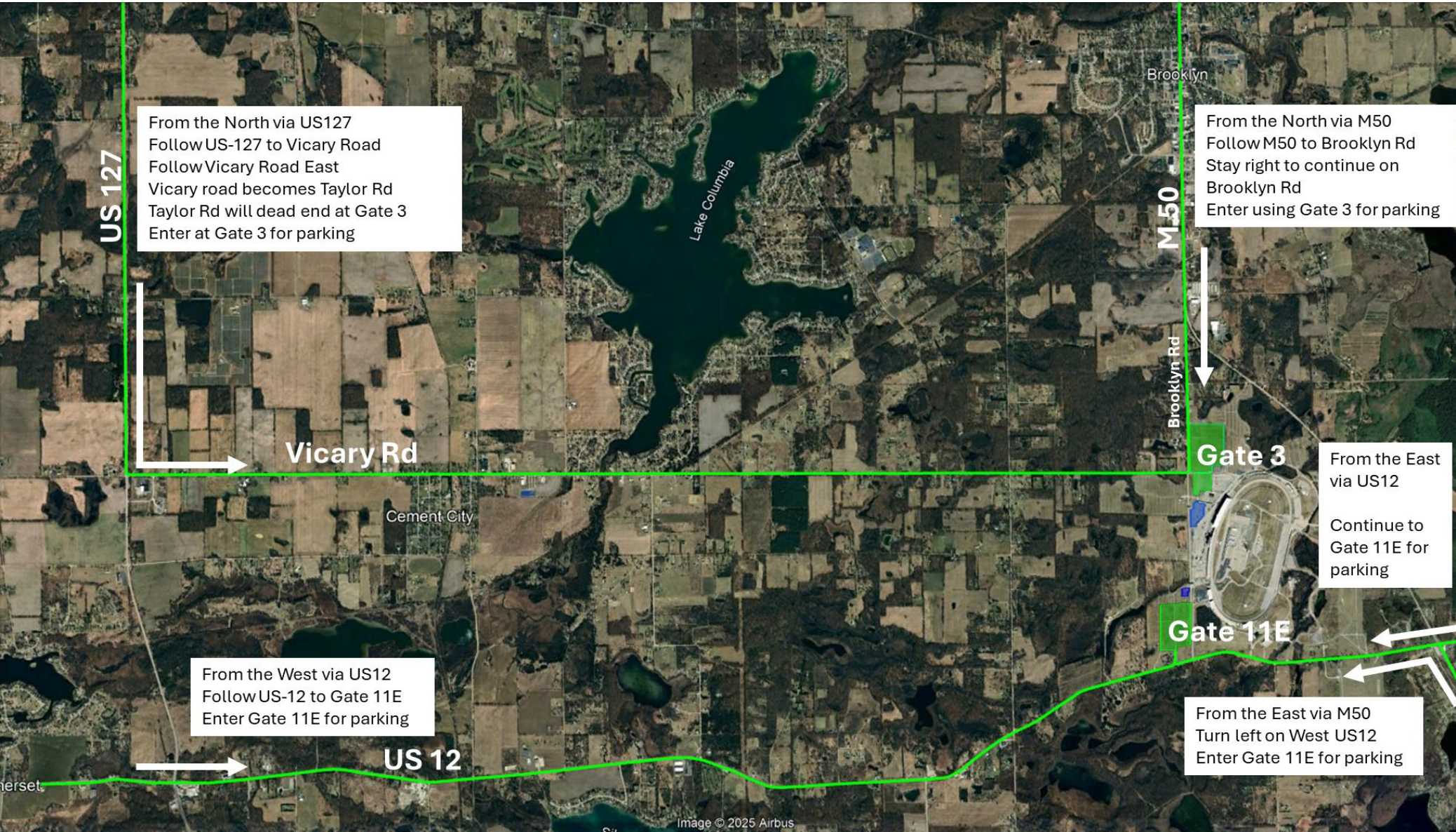


Celebrating 30 years of partnership



2025 MHSAA Cross Country State Finals

Spectator Routes



- There are 2 parking lots available for general parking
- Parking is Free
- ADA Parking is available at either lot.
- Tram service is available from both lots.
- MIS Team members are available to assist in both parking lots.

2025 MHSAA Cross Country State Finals

Parking Lots

Gate 3



GATE 3 Entrance

- General Parking
- ADA Parking (Permit required)

Gate 11E



GATE 11E Entrance

- General Parking (Spectators)
- ADA Parking (Permit required)

Tunnel



TUNNEL Entrance (Permit Required)

- Bus Parking & Athlete Drop-off
- Suite Parking

US-12



US-12 Entrance (Permit Required)

- Official Parking



Parking Lots

Lot 3

Gate 3

ADA
Lot

Officials

Entry Gate D

Buses

Suites

Tunnel

ADA
Lot

Lot 11

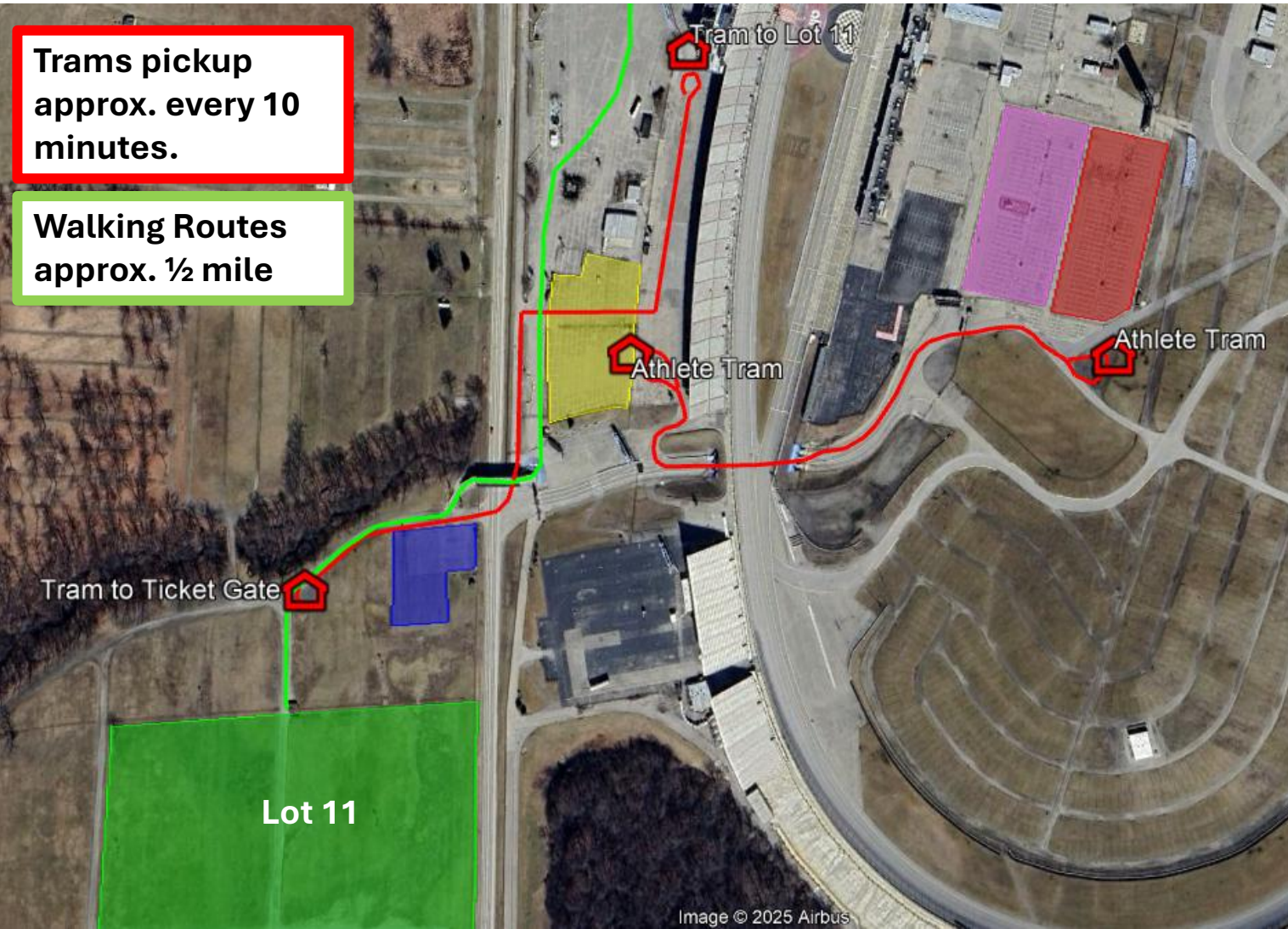
Gate 11E

US-12

2025 MHSAA Cross Country State Finals

Onsite Transportation

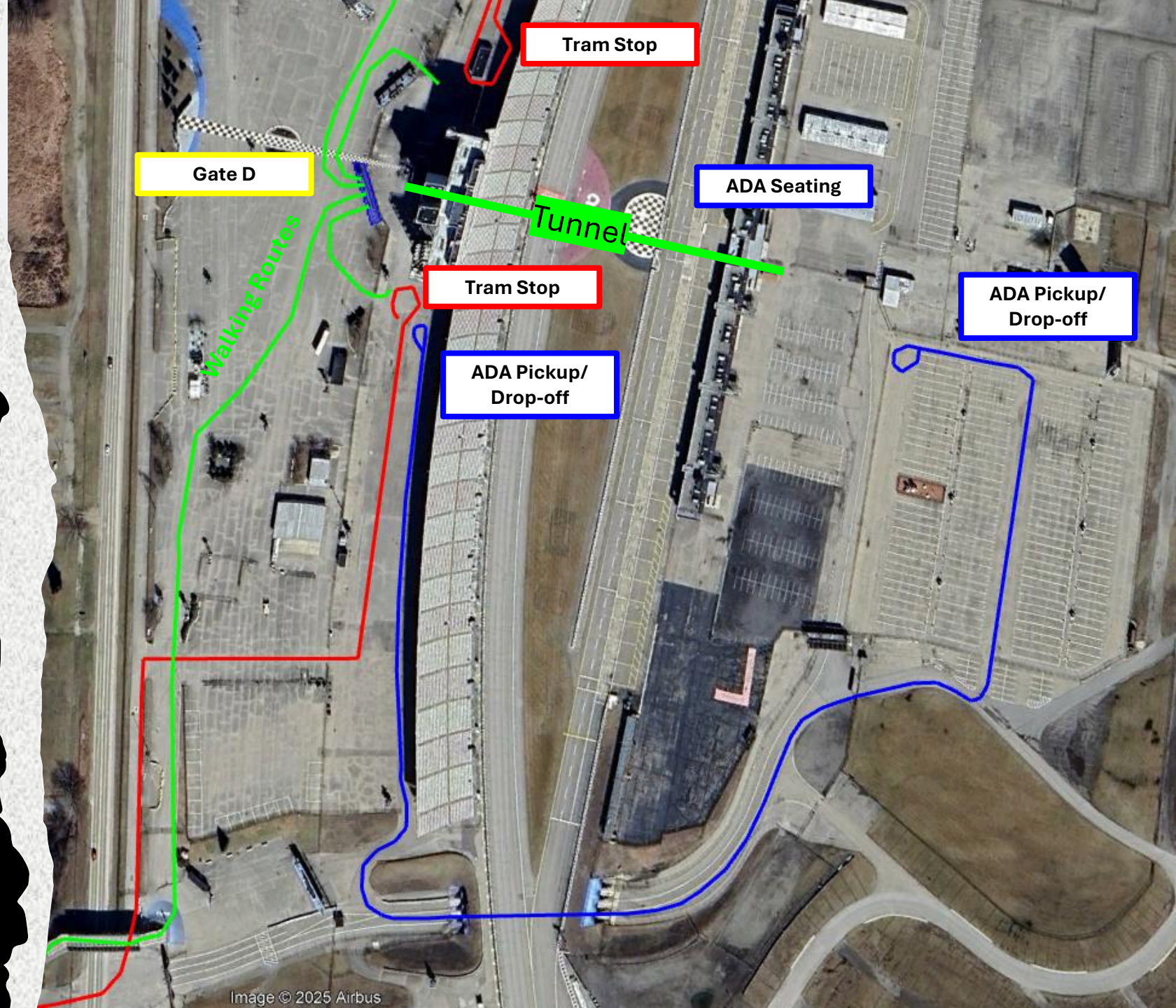
- Tram service is available from both general parking lots.
- Trams are free of charge.
- Trams stop at red topped tents in 10-15 min. intervals.
- Parking lots are approximately ½ mile from the ticket gates.
- Contact the nearest Tram Stop Ambassador or parking attendant if additional assistance is needed.
- Cart Service is available from all ADA lots to the ticket gates.
- Tram Service is also available from the ticket gates to the infield.



2025 MHSAA Cross Country State Finals

Spectator Viewing Areas

- All spectators will enter through Ticket Gate D.
- General admission grandstand seating is available in sections 2-20.
- ADA ramps and viewing platforms are available in each of the grandstand sections.
- Guests can access the infield using the pedestrian tunnel located under the grandstands near the start/finish line.
- ADA Van and tram service is available for guests unable to enter the infield through the tunnel.
- ADA seating is available in the infield.



2025 MHSAA Cross Country State Finals

Pit Road Suites & Garage Area

